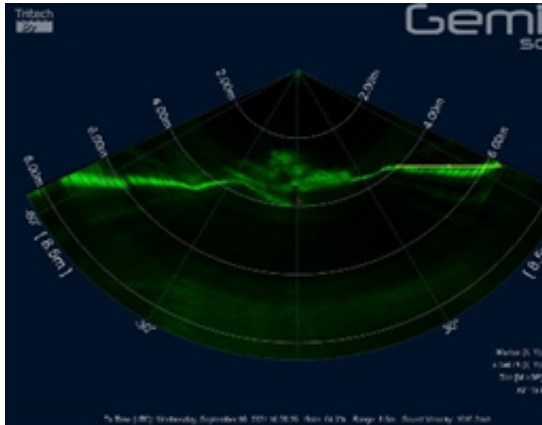


Global Marine - TRS1
Cable De-burial, Cut and Recovery & Reburial



Rotech Subsea were contracted by Global Marine to assist with removal of a section of the damaged Pentland East power cable using the TRS1 for de-burial and burial and the RSGC for the grab and cut of the damaged section of cable. The power cable was installed between mainland Scotland. The scope was De-burial, cable cut and recovery, and Post-lay Trenching of approx. 500m subsea cable. Rotech's TRS1 Controlled Flow Excavator tool was selected for this scope.

Operational water depths ranged from 80m- 85m and the soil conditions were soft sand. Currents ranged from 1.5 – 2.5kts, General Sea states we flat/calm.

For the De-burial phase the Rotech equipment was mobilised onto the Maersk Connector Vessel. The TRS1 was deployed using the vessel crane. The Cable was successfully de-buried from 0.6m - 0.8m below the seabed.

For Cable cutting operations the RSG-C was deployed at the aft of the vessel and lowered to depth using the vessel crane tied off to the crane wire every 15m. The ROV used the handle fitted to the rear to position the RSG-C in the correct orientation over the cable. The cable was grabbed and raised 2m to allow the ROV to sling either side of the grab for cable recovery, once the cable was slung the grab was lowered 1m to begin cutting operations. The cut took around 8mins from start to finish. The RSG-C was then disengaged and recovered to deck.

For the Post-lay Trenching phase the cable was to be buried to a minimum of 0.6m below the Seabed. TRS1 was positioned perpendicular over the cable with the nozzles slightly facing towards each other.

Distance from seabed: 3m

Vessel speed: 3m/min

Rotech Subsea successfully completed this scope for Global Marine. The TRS1 & RSG-C performed excellently achieving progress rates of 3m/min and completed the cable cut in under 10 minutes.