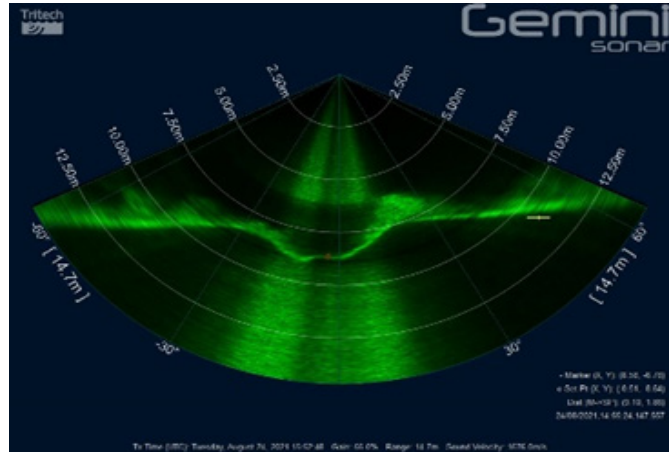


N-SEA RS2
Netherlands Cable IRM



Rotech were contracted by Client N-Sea to assist with cable repair operations on the OWF in the Netherlands. The scope of work was the de-burial of approx. 800m of old cable and burial of new cable. Rotech supplied the RS2 controlled flow excavator for these operations.

Operational water depths were around 25m and the soil conditions were medium dense to dense sand. Currents ranged from 0.2 – 1.8kts, General Sea states were 0m – 2m.

For the De-burial phase the Rotech equipment was mobilised onto the RS Sentinel Vessel. The RS2 was deployed from the aft of the vessel using the ships crane. The Cable was successfully de-buried from 1.64m – 2.2m below the seabed.

CFE Tool Distance from seabed-3-4m

Vessel speed-3-5m/min

Cable depth-1.64-2.2m

For the burial phase the Rotech crew and equipment were mobilised onto the CLV Elektron. Standard deployment was used when deploying from vessel using the ships crane which was situated on the starboard side/mid ship of the vessel. Forward and Aft tuggers were used using Dyneema Rope and attached in the forward and aft positions of the RS2 for stability during CFE operations.

CFE Distance from seabed-3-4m

Vessel speed-4m/min

Cable target DOB –1.5m to 2m

Rotech Subsea successfully completed this scope for N-Sea. The RS2 performed as expected and achieved great progress rates. The De-burial and re-burial works were completed to N-sea specification and within schedule