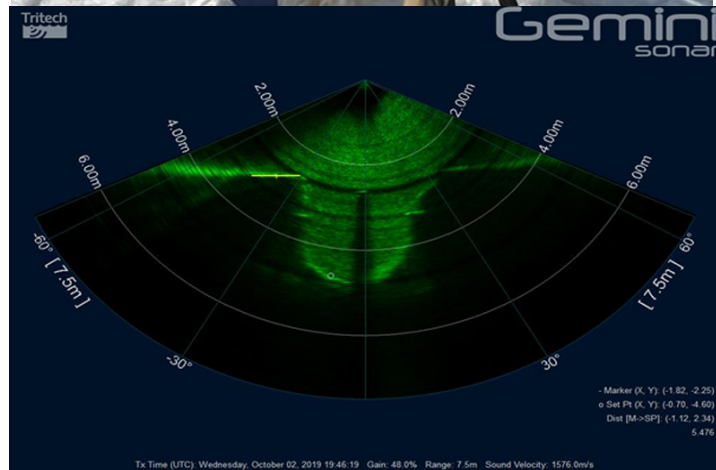




TRS1LD & Jets - Cable Burial

Q3 2019 - TRSL1D & JETS SPREAD ON OSV RELUME



Rotech Subsea were contracted by Orsted to provide the TRS1LD Jet Trenching tool - equipped with HP jets - to carry out cable burial at OWF located in the Irish Sea. Rotech Subsea took control of all operations for this project from chartering the vessel to contracting all relevant parties required to carry out a successful excavation project. The TRS1LD was selected by Orsted due to its unparalleled technical and performance capabilities resulting in increased productivity and a reduction on the projects total costs.

The subsea spread of equipment was mobilised on the OSV Relume and deployed using the ships crane. Two separate cables (WOW03 & WOW04) - totalling approximately 3.5km in length - were to be trenched to Orsted specification of 2.0m TOC in the soft sand areas and to 1.0m TOC in the Stiff Clay areas. Water depth ranged from -2.0m to +14.0m LAT.

The project was a success, with the cables trenched to Orsted Specification at an average rate of 4m/min in the soft sand areas and 2m/min in the stiff clay.