

Applications

- Cable/Pipeline/Umbilical Trenching
- Cable/Pipeline/Umbilical Deburial
- Freespan Rectification
- Backfilling & Burial
- Sandwave Removal
- Jack Up Spud Can Clearing & Cleaning
- UXO & Salvage Deburial
- Rock Dump & Drill Cutting Removal
- Harbour Clearance
- Subsea Structure Deburial and Access

Services

- Safer non-contact methods
- Jet trenching solution for cohesive and non cohesive soils
- Highly qualified & experienced operators
- Real time sonar monitoring of service

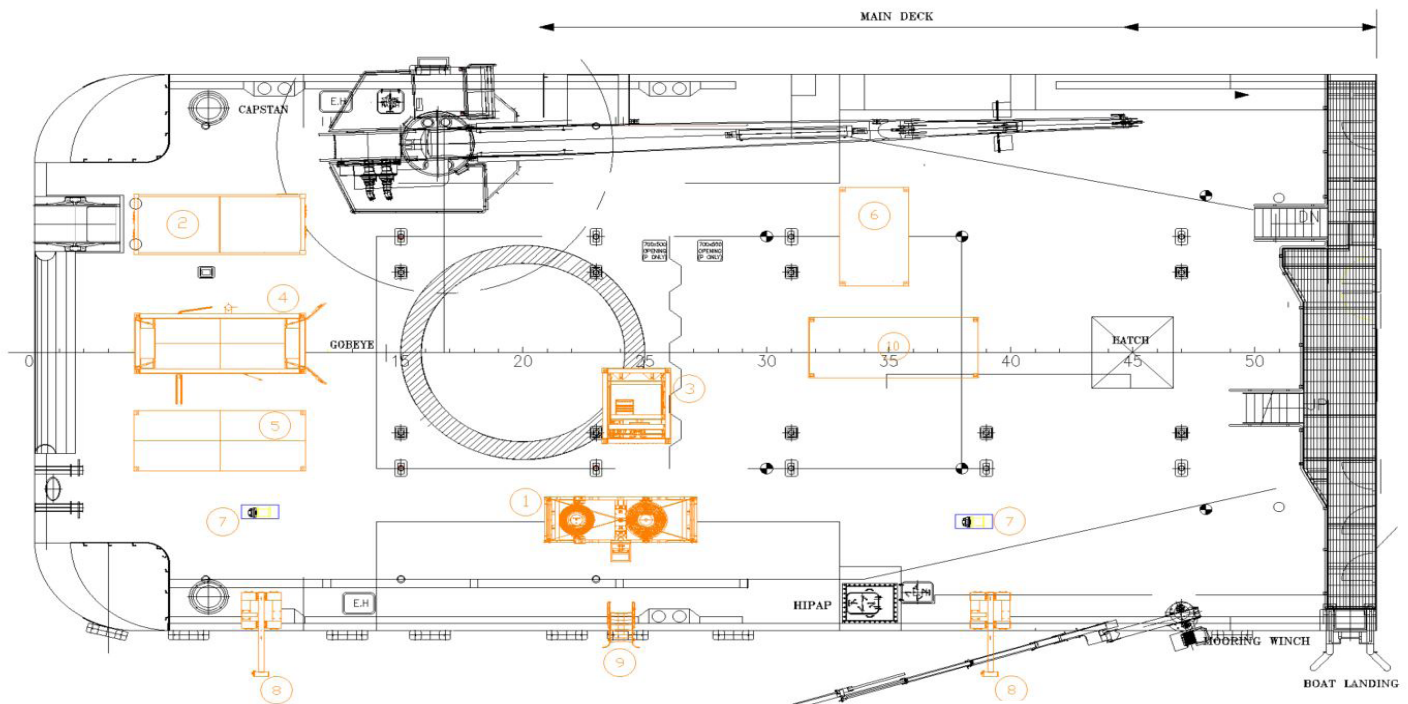
Capabilities

Max RS2 Jet Outlet Pressure	60kPa
Max RS3 Jet Outlet Pressure	300kPa
Max RS2 Jet Flow	4000 L/s
Max RS3 Jet Flow	300 L/s
Operating Depth	3m-300m*

Personnel

- 6 operators for 24hr operations

RS2-3 Deck Plan



Key

No.	Item	Dimensions (m)	Weight (kg)
1	RS2-3 Tool	5.40 x 2.60 x 2.25	11,000
2	Spares Container (Rotech)	6.10 x 2.45 x 2.70	12,000
3	Hydraulic Spooler	3.05 x 2.44 x 2.59	11,000
4	Hydraulic Power Unit	6.60 x 2.45 x 2.60	16,000
5	Dual Air Compressor	6.10 x 2.45 x 2.40	12,800
6	Control Shack	3.96 x 2.40 x 2.90	8,000
7	Tugger Winch	1.34 x 0.56 x 0.69	1100
8	Clump Weight Davit	3.42 x 2.45 x 2.60	1800
8	** Universal Roller Fairlead **	1.55 x 0.56 x 1.14	500
9	Overboard Chute	2.90 x 0.84 x 1.17	1000
10	20ft Half Height	6.10 x 2.50 x 1.40	11,000

Note: Number 8 is interchangeable depending on operational water depth **

For over two decades Rotech have pioneered the development of cutting edge subsea controlled flow excavation technology. A dedication to innovation has seen Rotech continually evolve and enhance our specialised equipment to meet demand and deliver for the needs of many major clients in the subsea oil & gas and energy sectors.