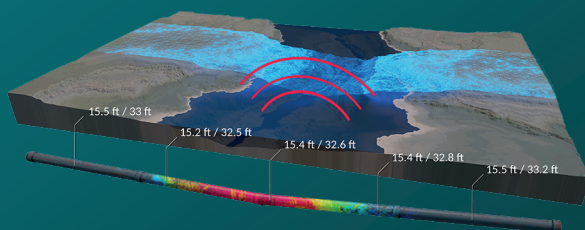




## Locating and characterizing buried pipelines using innovative magnetic technology, UAV's and advanced analytical techniques

Non-invasive, precise and rapid reporting

Remote, non-contact technology – no contact to the pipe and no effect on flow in the pipe



### Technology capabilities

Precise geolocation of pipeline centerline

Accurate 3D mapping of depth of cover profile

Detailed bending strain analysis

### Key applications

Difficult to access crossings

Improving geolocation with high degree of confidence

Geotechnically active areas

Water crossings

# MAPPING OF BURIED NETWORKS

Skipper NDT inspection allows the creation of high-resolution magnetic maps regardless of terrain conditions. It allows the creation of a precise 3D digital twin of the network.

## SKIPPER'S DRONE FEATURES



### Hardware

High precision geolocated magnetic measurements (magnetometers, GPS, IMU, electronic card and processors)



### Software

Proprietary algorithms allowing an automatic data interpretation under field conditions



### Technology

Skipper NDT system improves field operational safety, reducing data acquisition/ processing time & cost

## OUR COMPETITIVE ADVANTAGES



Reduced human risk thanks to autonomous data collection



Access to the entire network regardless of ground conditions or obstacles



Continuous data acquisition enabling identification of critical points such as pipeline crossing, parallel lines or metallic objects



Speed of acquisition 3X quicker than traditional tools which reduces inspection time and cost

*Authorised distributor:*



**IEV (MALAYSIA) SDN. BHD.**

Level 5, Menara PKNS, Block A, No. 17 Jalan Yong Shook Lin,  
46050 Petaling Jaya, Selangor Darul Ehsan, Malaysia.

T: +6(03)79319921 F: +6(03)79319964 E: [info@iev-group.com](mailto:info@iev-group.com) W: [www.iev-group.com](http://www.iev-group.com)